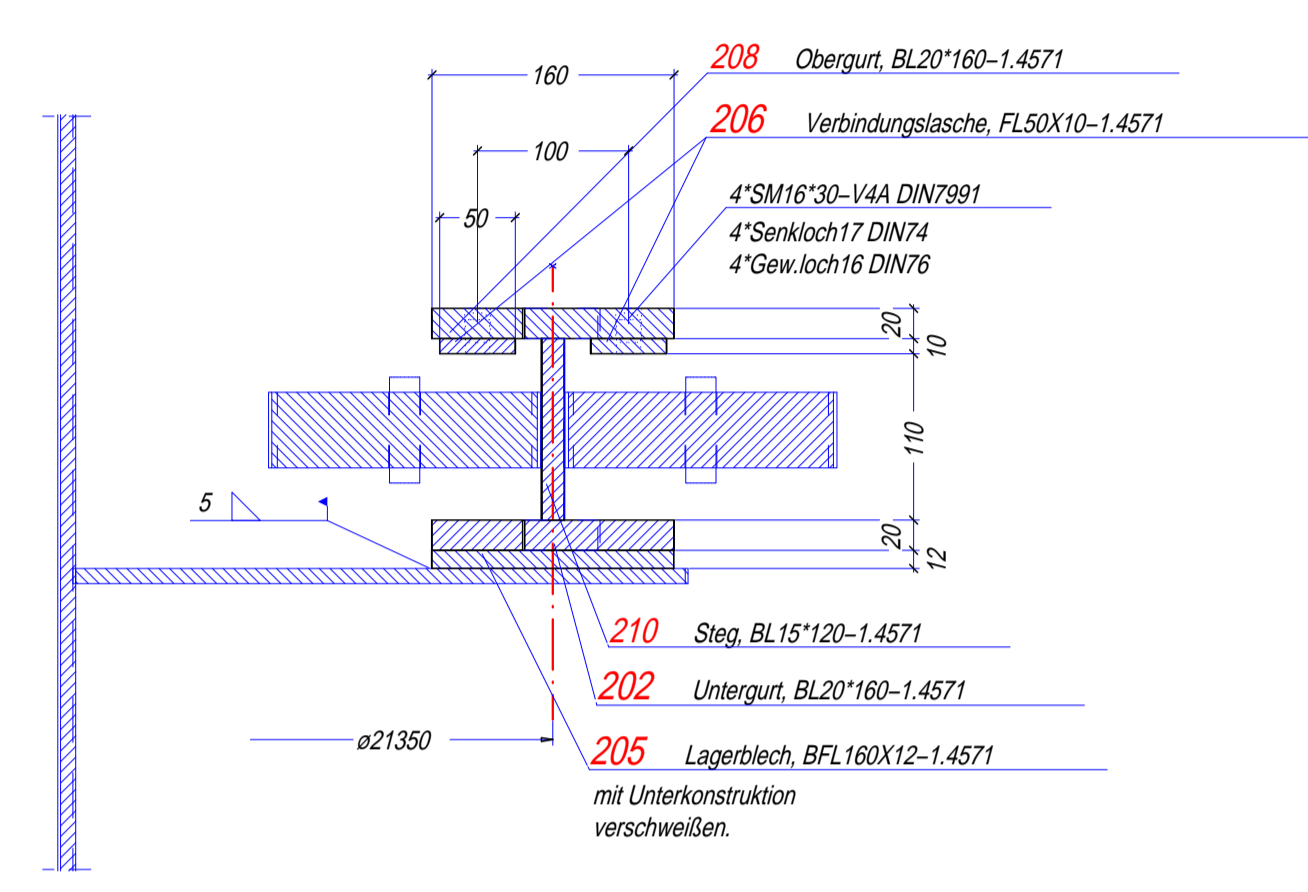
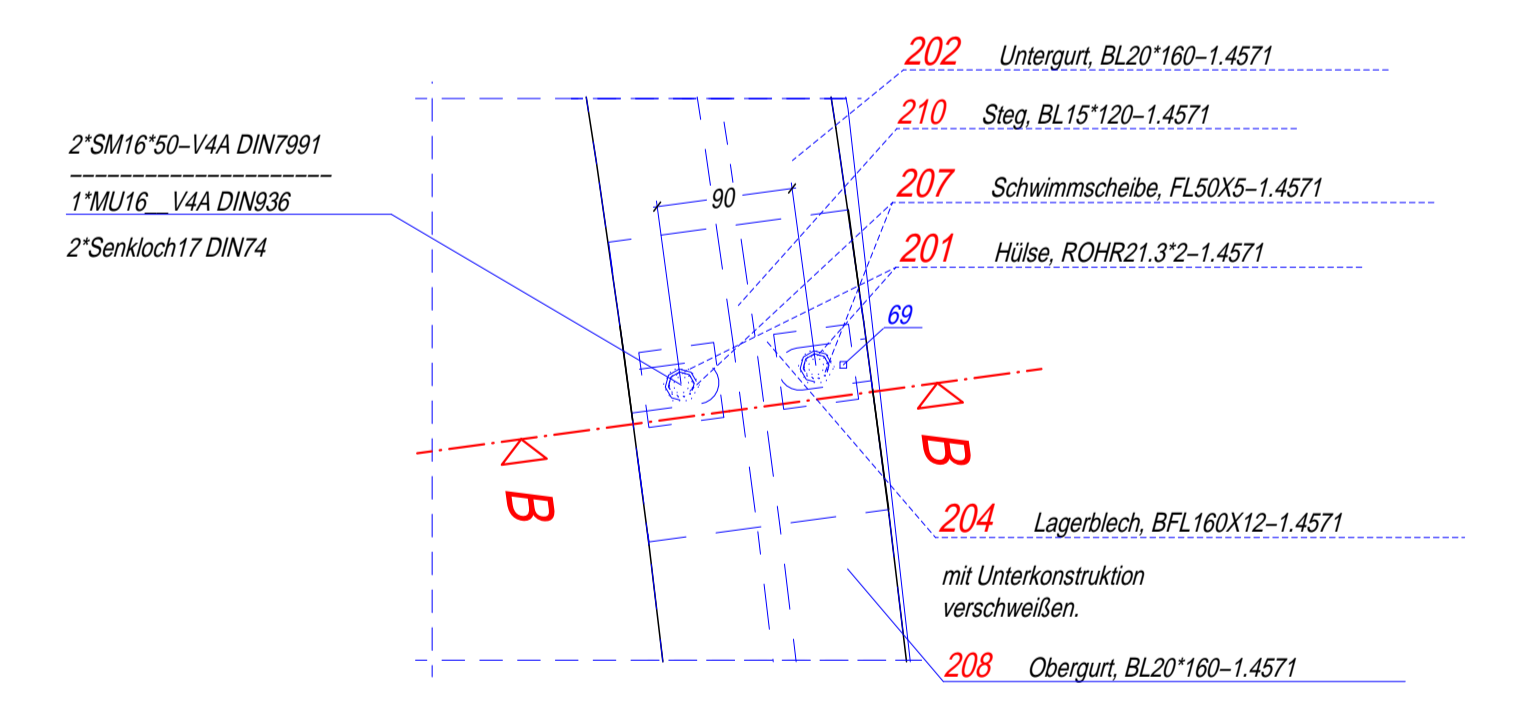
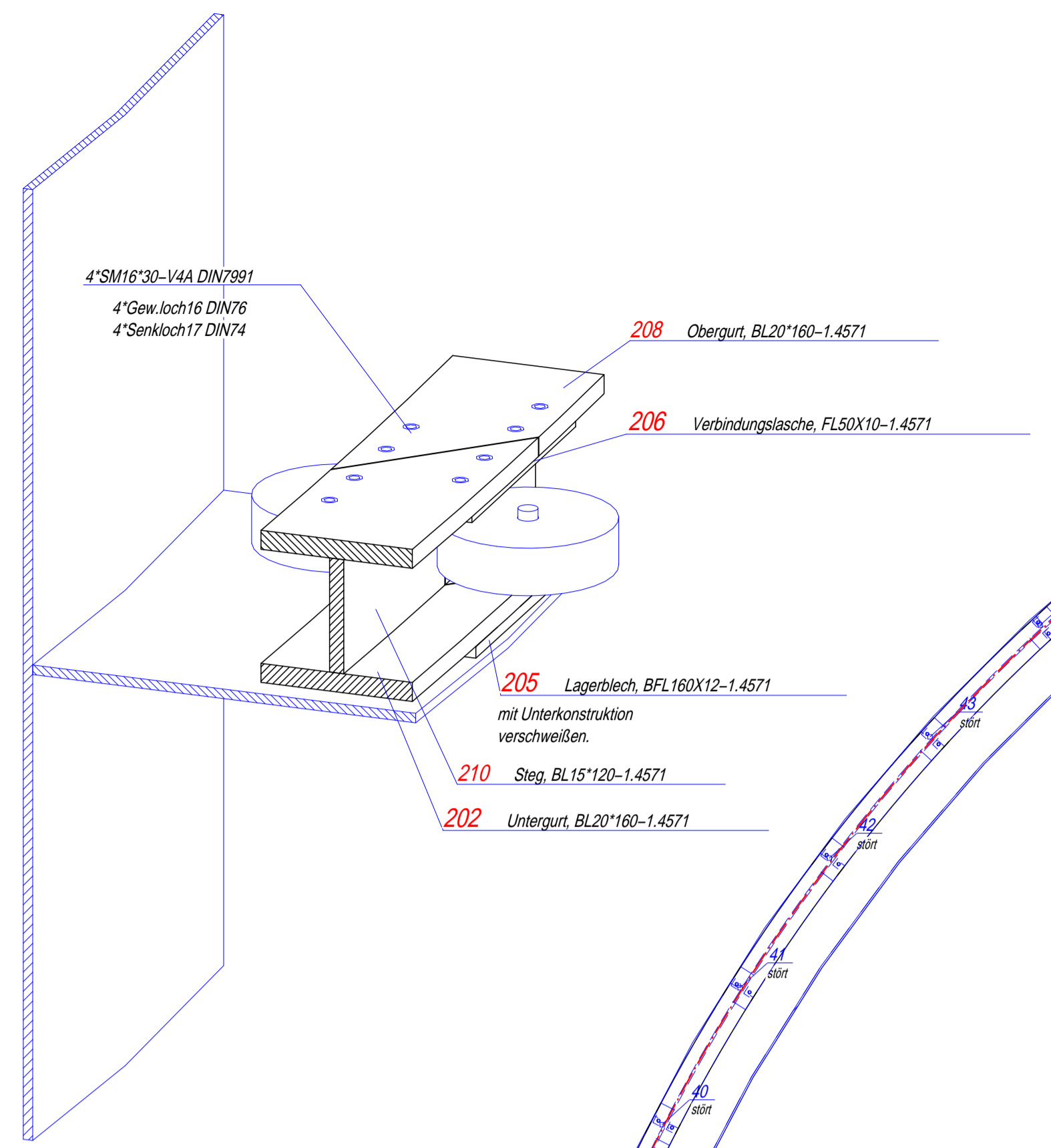


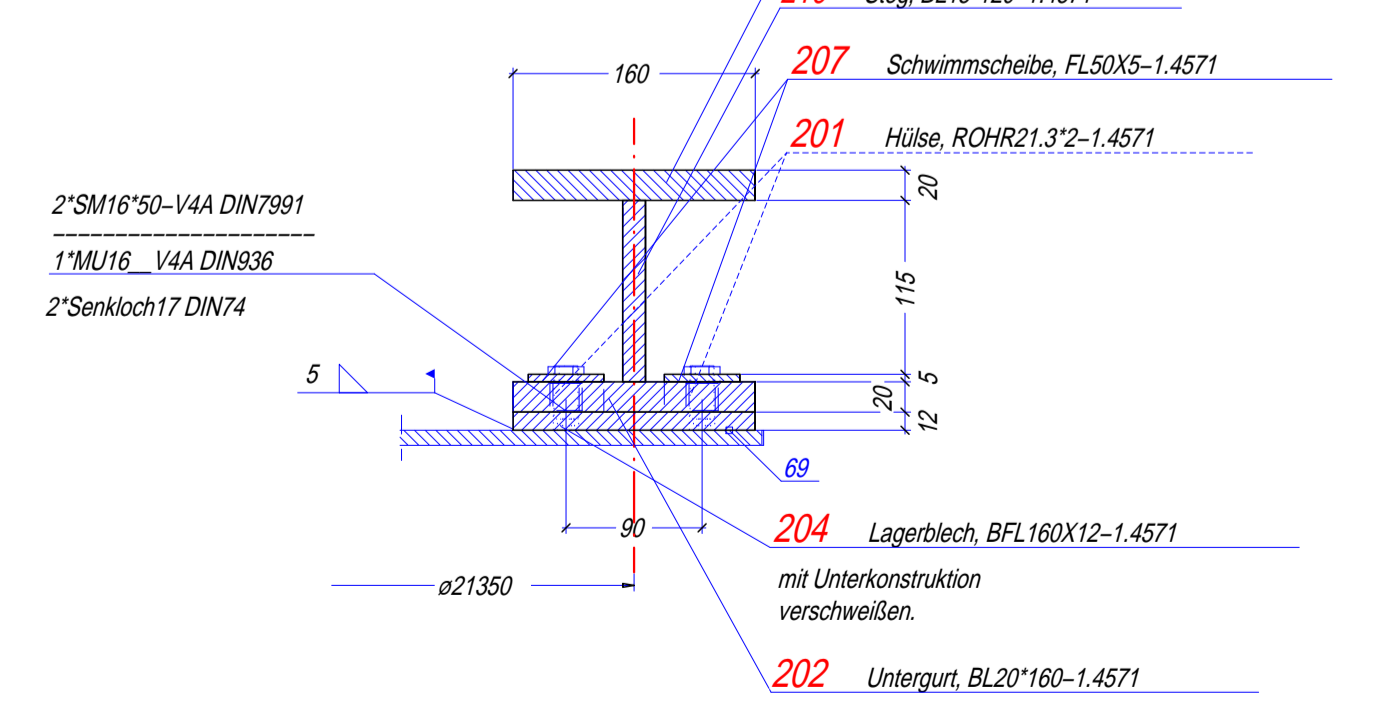
Detail Z
M1:5



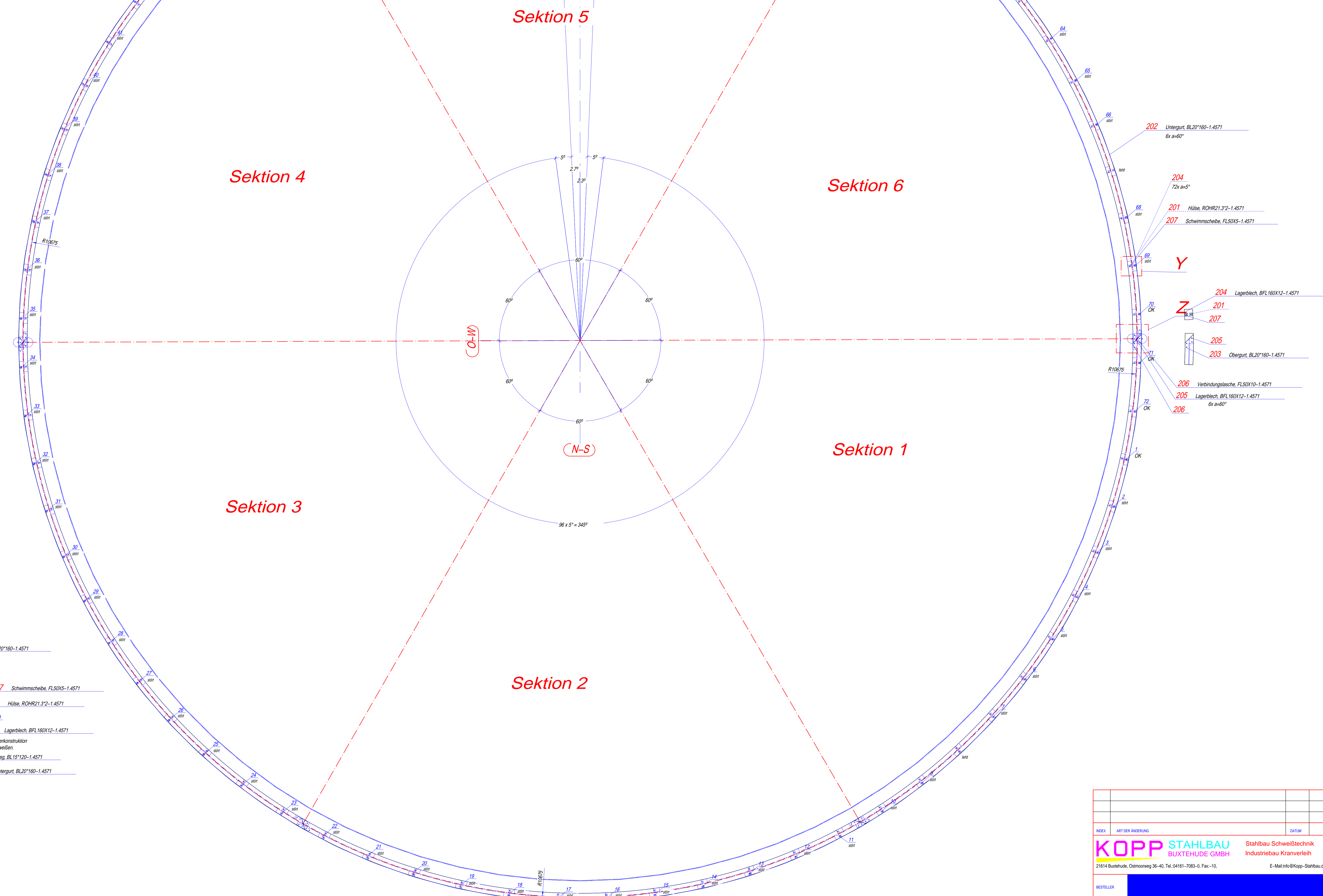
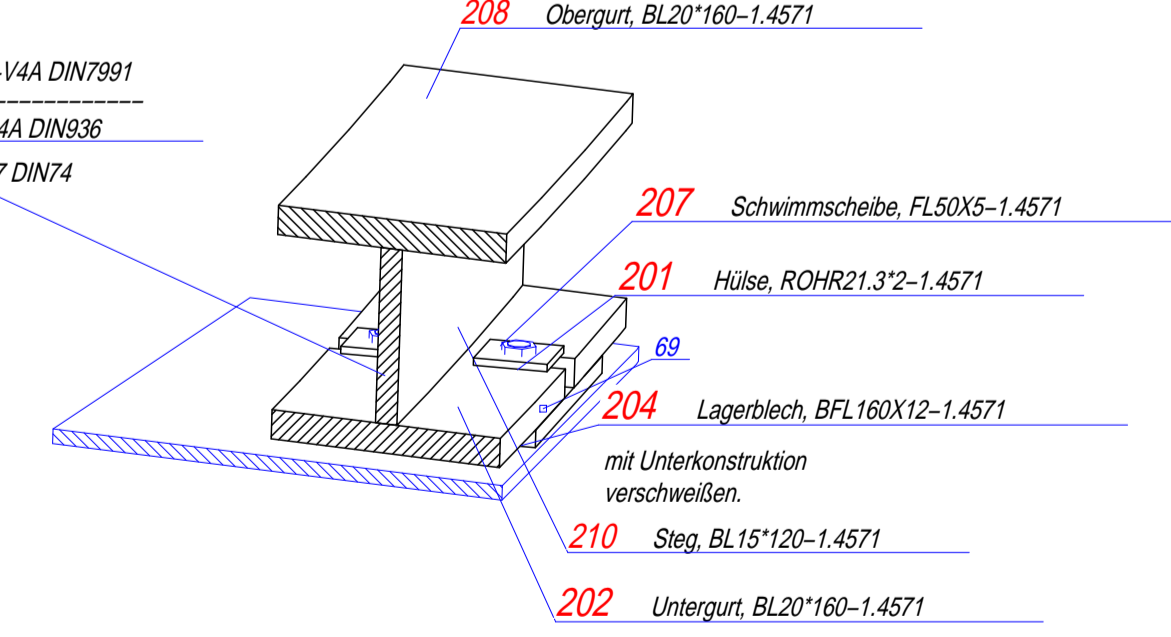
Schnitt A-A
M1:5



Detail Y
M1:5



Schnitt B-B
M1:5



INDEX	ART DER ÄNDERUNG	DAITUM	NAMEN

KOPP STAHLBAU		Stahlbau Schweißtechnik	
BUXTEHUDE GMBH		Industriebau Kranverleih	
21614 Buxtehude, Osterweg 36-40, Tel. 04161-7083-0 Fax -10, E-Mail info@kopp-stahlbau.de			
RESTELLER			
BAU			
BAUTEK.			
OWERPL.-SONDIZ	Material 1.4571	MASSSTAB	1:30 1:5
DAITUM	29.04.2008	LEFFER-TEILNEN	KW 36.2008
GEZEICHNET	Walther	MONTAGE-MECHANIK	KW 36.2008
GEPRÜFT	-	Fornar	DIN A0
		BLATT	1